

Our Global Presence



With a growing footprint across Europe, Asia, the Middle East, and Africa, our global presence enables us to deliver advanced prostate biopsy technology and support to diverse healthcare systems. We ensure access to reliable, cost-effective prostate biopsy solutions backed by expert training.

CONTACT US

 query.globalps@gmail.com


 +44 7780398198



Surgeon to Surgeon on site free training
24/7 Support until you are satisfied!
www.globalprostatesolutions.com



Global Prostate
Solutions



**Empowering
the future of
Prostate Diagnostics**

About US

Global Prostate Solutions is a leading innovator in advanced prostate biopsy solutions, specialising in transperineal prostate biopsy technologies. With over **10+ years** of experience, we are a trusted manufacturer and supplier serving the UK and India.



We act as a central hub for prostate health, connecting patients and healthcare providers with expert doctors and advanced diagnostic solutions. Our ultrasound-guided biopsy technology supports early and accurate prostate cancer detection, improving treatment outcomes.

With growing clinical evidence favoring the transperineal approach over the traditional transrectal method, we advocate for safer biopsy practices. By avoiding rectal wall penetration, **transperineal biopsy** significantly reduces infection risk while enhancing precision and sampling accuracy, giving surgeons greater confidence and improving patient safety.

Our dedicated team is committed to advancing men's prostate health through reliable diagnostic tools, expert support, and flexible options **Buy, Rent, or Get It Free** making advanced prostate care more accessible

At **Global Prostate Solutions**, compassion, innovation, and medical excellence drive our mission to improve prostate health and quality of life worldwide.

High-performance ULTRASOUND (SONOSCAPE S70i)



As a high-performance trolley ultrasound platform, the SonoScape **S70i** delivers advanced imaging precision and intelligent workflow tools to support confident diagnosis across cardiology, vascular, TCD, and MSK applications.

Designed for seamless hospital integration, the **S70i** supports DICOM and HL7 connectivity, wired and Wi-Fi networking, and large onboard storage for efficient data management and reporting.

Experience superior clarity and efficiency powered by cutting-edge imaging architecture and Doppler innovation.

1. **C-Field+™ Architecture** Enhanced resolution, deeper penetration, and high frame rates.
2. **Advanced Doppler Suite** CW, PW, TDI, Micro F, SR Flow, and Bright Flow
3. **Smart Automation** S-Fetus & SonoAssistant for faster, consistent exams.

BCL10-5 Biplane Probe

Product Details

1. SonoScape BCL10-5 Biplane Probe for Urology
2. **Frequency range:** 4.0-16.0 MHz
3. **Center frequency:** 6.0 / 7.5 MHz
4. **FOV:** 200°/60 mm
5. **Biopsy Guide:** Yes



Transperineal BIOPSY BOX



Our **Transperineal Prostate Biopsy Kit** is a comprehensive test kit, designed to include all major consumables for hassle-free transperineal biopsy procedures.

Engineered for accuracy and efficiency, it provides healthcare professionals with the tools needed for optimal tissue sampling, reliable pathology, and enhanced diagnostic confidence. The kit works seamlessly with a Stepper Stabilizer to ensure precise needle placement guided by ultrasound imaging.

Components Included

- ▶ Coaxial Needle
- ▶ Biopsy Gun
- ▶ Syringe with Ultrasound Gel
- ▶ Needle Guide
- ▶ Probe Cover
- ▶ Spinal Needle

Key Features

- ▶ High-quality components for precision, safety, and infection control
- ▶ Designed for patient comfort and procedure efficiency
- ▶ Supports early and accurate detection of prostate conditions

AI Enhanced ULTRASOUND (SONOSCAPE E10I)



As a key part of SonoScape's portable ultrasound range, **E10** delivers reliable image quality with efficient tools that save time and support confident point-of-care diagnosis in a compact design.

Experience precision and clarity with the most cutting-edge triple vision setup!

1. 15.6-inch LCD Monitor
2. 12.3-inch LCD Touchscreen
3. Innovative Display of Battery Status

The **E10's** magnetic charging port delivers effortless power-ups while protecting cables from long-term wear and tear.

BCL10-5 Biplane Probe

The SonoScape **BCL10-5 Biplane Probe** offers high-quality imaging for detailed examinations. It operates within a 4.0–16.0 MHz frequency range and provides a wide 200° field of view for clear visualization. The built-in biopsy guide supports accurate procedures and improves clinical efficiency.

Product Details

1. SonoScape BCL10-5 Biplane Probe for Urology
2. **Frequency range:** 4.0–16.0 MHz
3. **Center frequency:** 6.0 / 7.5 MHz
4. **FOV:** 200°/60 mm
5. **Biopsy Guide:** Yes



Coaxial Needle



Designed for precision and stability in interventional radiology, this needle ensures accurate guidance for biopsies and tissue sampling.

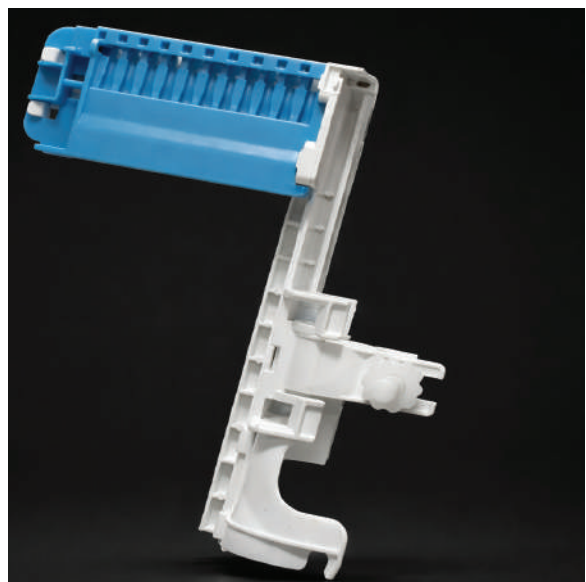
Key Features

- Depth marks for measurement
- Stopper for controlled insertion
- Echogenic marker for clear ultrasound/CT visibility.

Specifications

- Material: Stainless Steel
- Sterilisation: Ethylene Oxide (EO)
- Sizes: Available in various gauges and lengths

Needle Guide



This device is used to direct a needle or instrument into its proper course when performing a clinical and or surgical procedure with the use of the ultrasound probe. This is a single-use device

Key Features

- Stable needle alignment
- Minimises deviation for reliable results
- Compatible with multiple needle sizes

Specifications

- Material: Stainless Steel
- Sterilisation: Ethylene Oxide (EO)
- Sizes: Available in various gauges and lengths

Stepper STABILIZER

The **Stepper Stabilizer** system is a sophisticated medical device designed to enhance the accuracy of Transperineal Ultrasound Guided Prostate biopsies. It achieves this by providing unparalleled stability and precise needle guidance during the procedure.



Key Features

1. **Precision Needle Control:** Fine adjustment for accurate needle trajectory.
2. **Quick Cleaning & Maintenance:** Transducer detaches easily for sterilization.
3. **Improved Efficiency:** Independent grid movement ensures optimal placement

Probe Cover



Protect the ultrasound probe during procedures, ensuring sterility, reducing infection risk, and maintaining probe performance.

Key Features

- Prevents cross-contamination
- Maintains acoustic transparency for clear imaging
- Secure fit for different probe types
- Enhances probe longevity.

Specifications

- Material: PE, PU, Latex
- Sterilisation: Ethylene Oxide (EO)
- Size: LPCOVG (3–20 cm × 30–250 cm), LPCOVE (1–10 cm × 30–250 cm)
- Classification: Class Is (EU MDR)

Biopsy Gun



Automatic, spring-loaded device for precise soft tissue sampling. Ensures consistent cores, speed, and minimal patient discomfort.

Key Features

- Precise and reliable tissue sampling
- Consistent core yield
- Ergonomic, user-friendly design
- Minimises patient discomfort.

Specifications

- Model: QZDA, QZDB (with coaxial needle)
- Needles: 14G, 16G, 18G & 20G
- Material: PP, ABS, SUS304 Stainless Steel
- Function: Core biopsy sampling

Ultrasound Gel



The medium for diagnostic ultrasound ensures clear imaging by eliminating air gaps and enhancing sound transmission. Non-irritating, safe, and easy to apply.

Key Features

- Optimal acoustic transmission
- Enhances diagnostic precision
- Biocompatible, skin-safe formula
- Maintains probe integrity

Specifications

- Acoustic Efficiency: Optimal sound transmission
- Sterilisation: Cobalt-60, pH 5.5–8.0
- Classification: Class Is (EU MDR)

Spinal Needle



Stainless-steel spinal needle with stylet, designed for anesthetic injection into the subarachnoid space. Provides controlled puncture with safety features to minimise risks during procedures.

Key Features

- Sharp stainless-steel cannula with smooth stylet
- Ergonomic hub for secure handling
- Single-use, sterile, non-pyrogenic
- Designed to minimise trauma and risk

Specifications

- Material: Stainless Steel, Holder Hub
- Sterilisation: Ethylene Oxide (EO)
- Shelf Life: 5 years
- Storage: 0°C–45°C, cool & dry conditions